



JENIS DAN FUNGSI STRUKTUR SEL

apt. Catharina Apriyani Wuryaningsih Heryanto, M.Farm

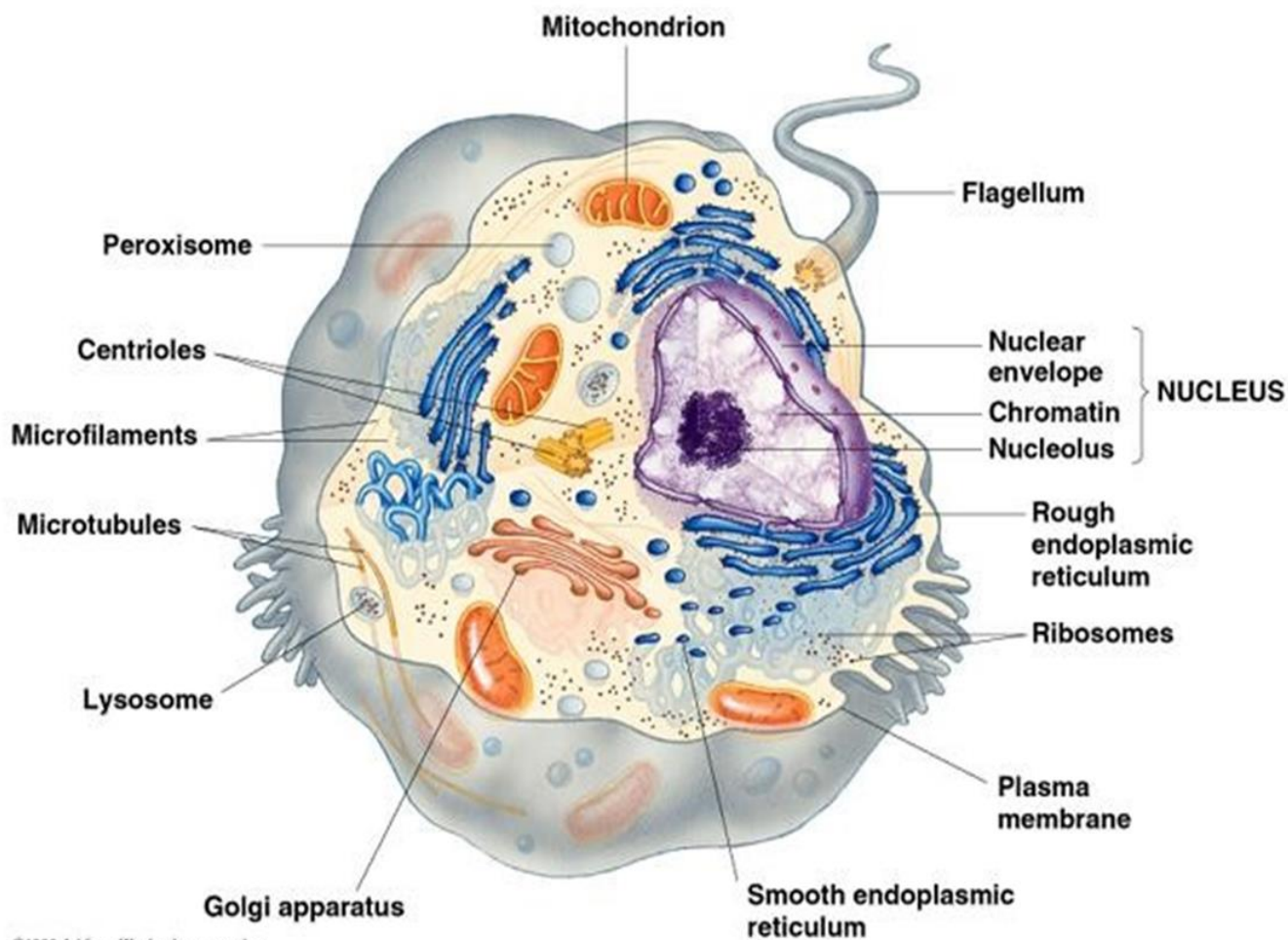
**PROGRAM STUDI FARMASI
STIKES NOTOKUSUMO
2024**



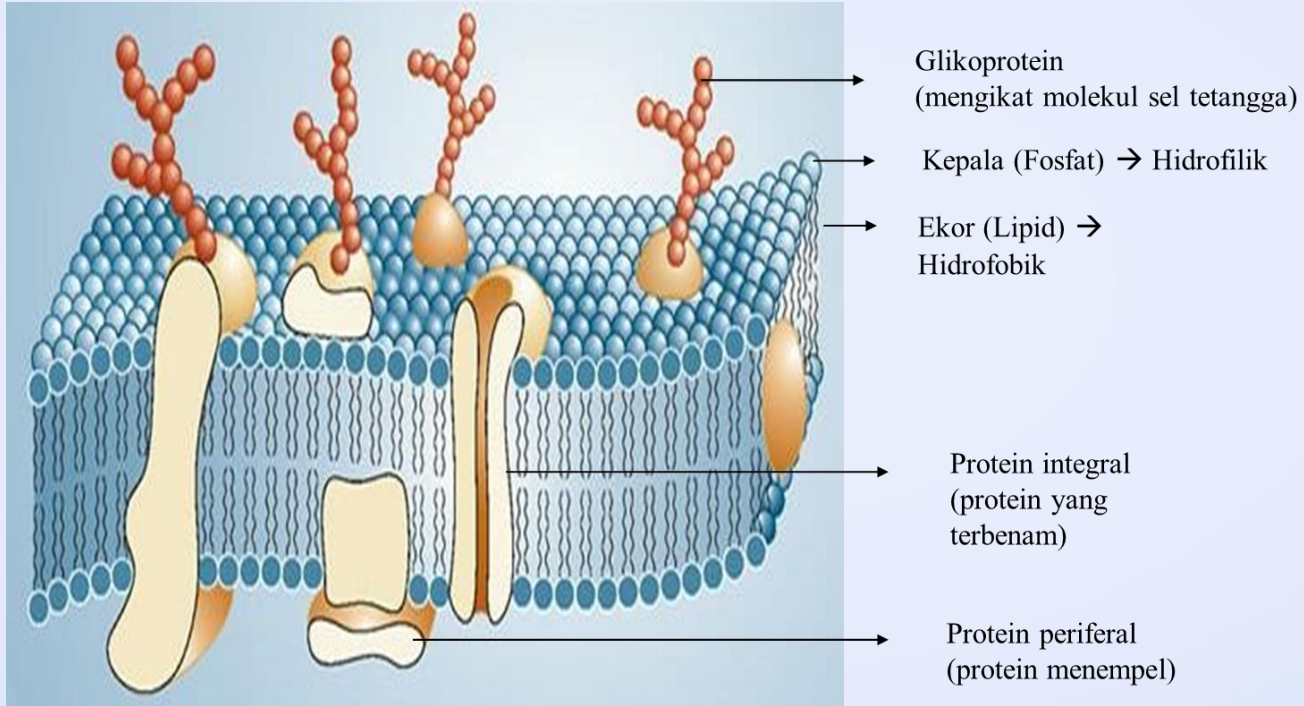
Struktur sel



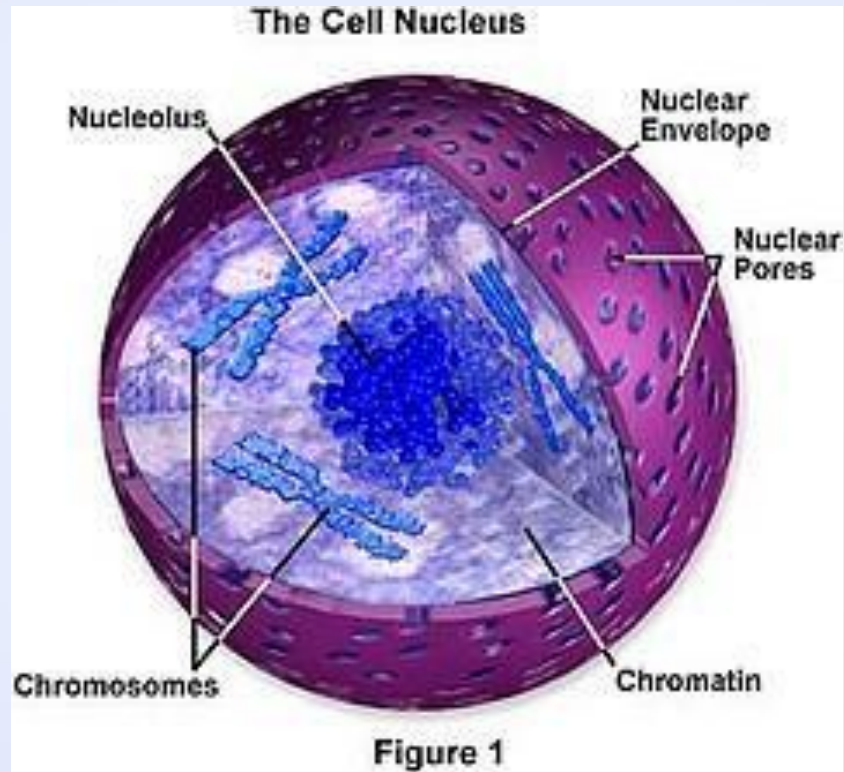
1. Membran plasma
2. Sitoplasma
3. Inti sel
4. Sitoskeleton
5. Ribosom
6. Retikulum Endoplasma
7. Badan Golgi
8. Lisosom
9. Peroksisom
10. Mitokondria
11. Vakuola
12. Mikrotubula dan Mikrofilamen



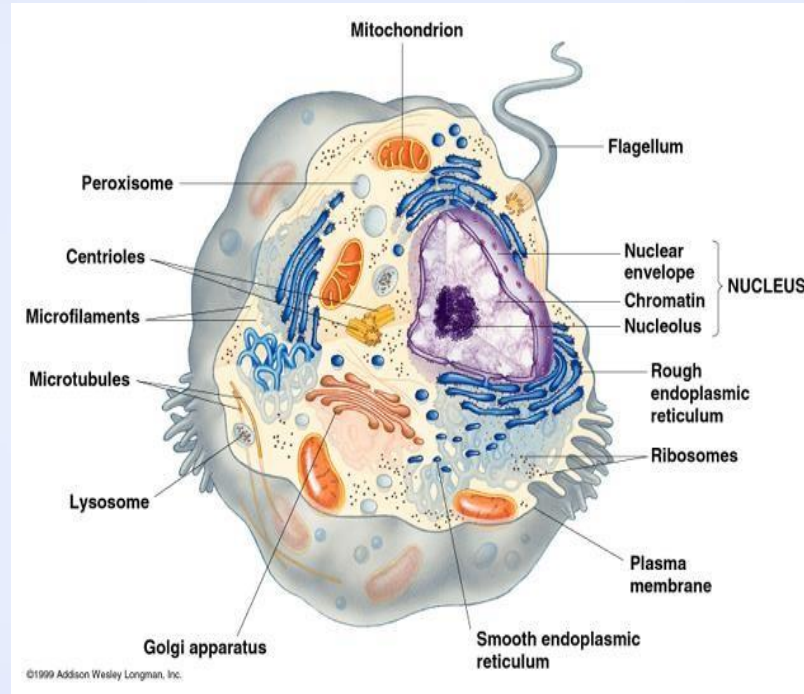
Membran sel



Nukleus

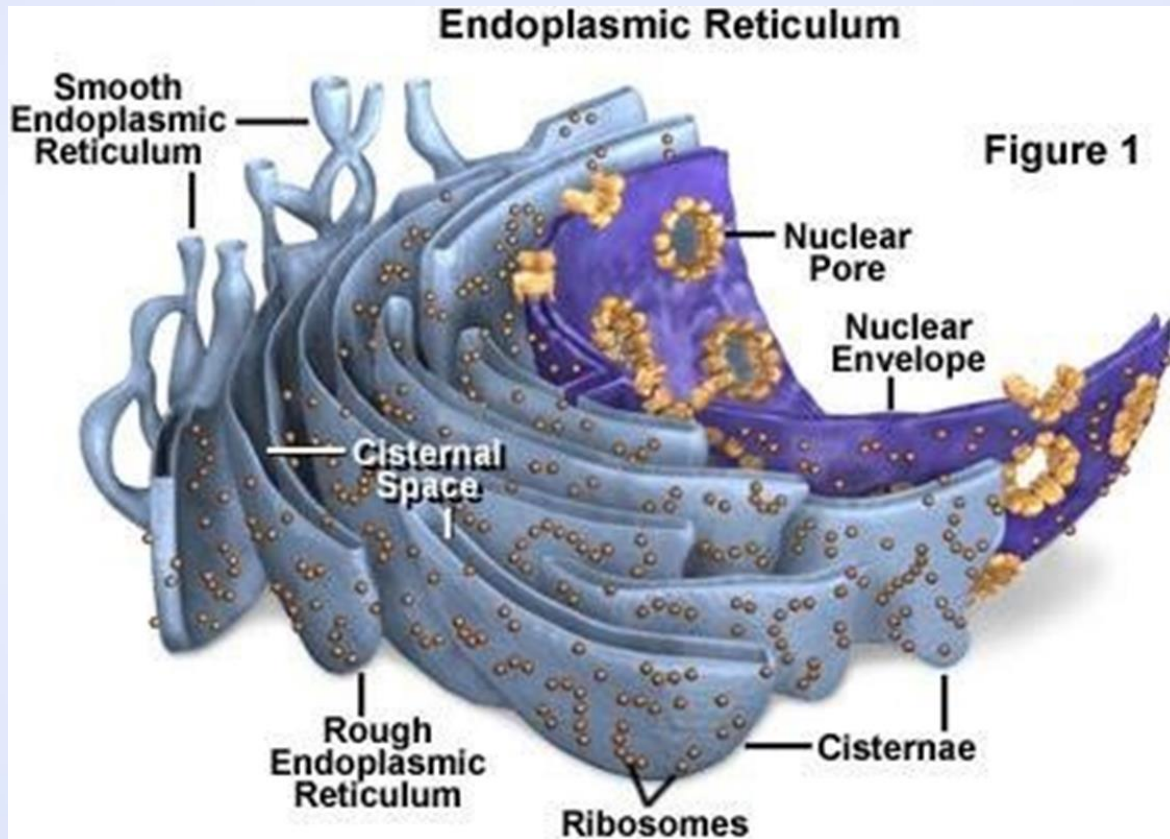


Sitoskelton

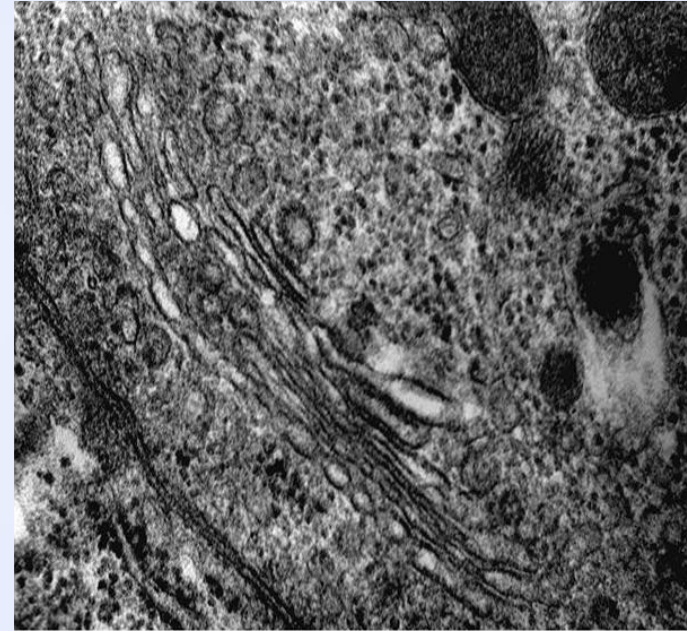
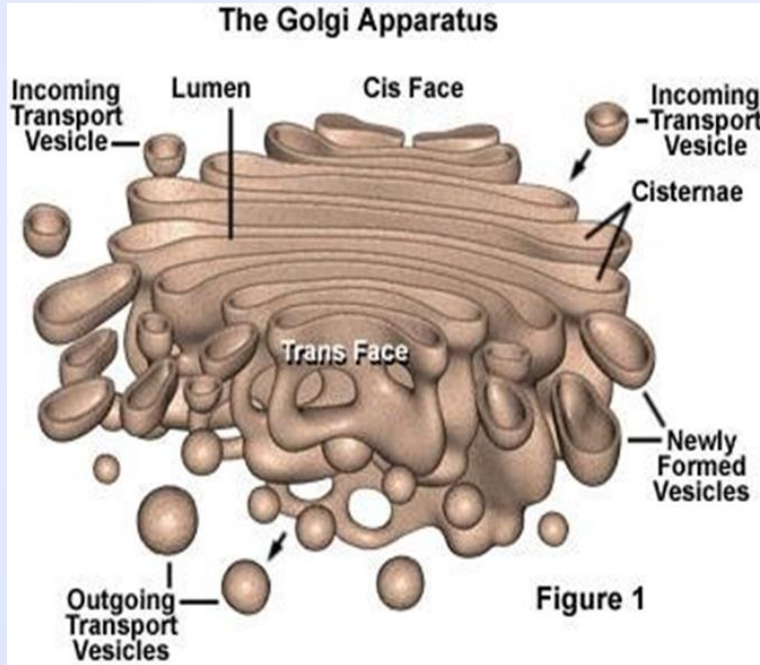


Sebagai pemberi bentuk sel, pengatur gerakan sel dan berupa jaringan protein filamen

Retikulum endoplasma



Badan golgi

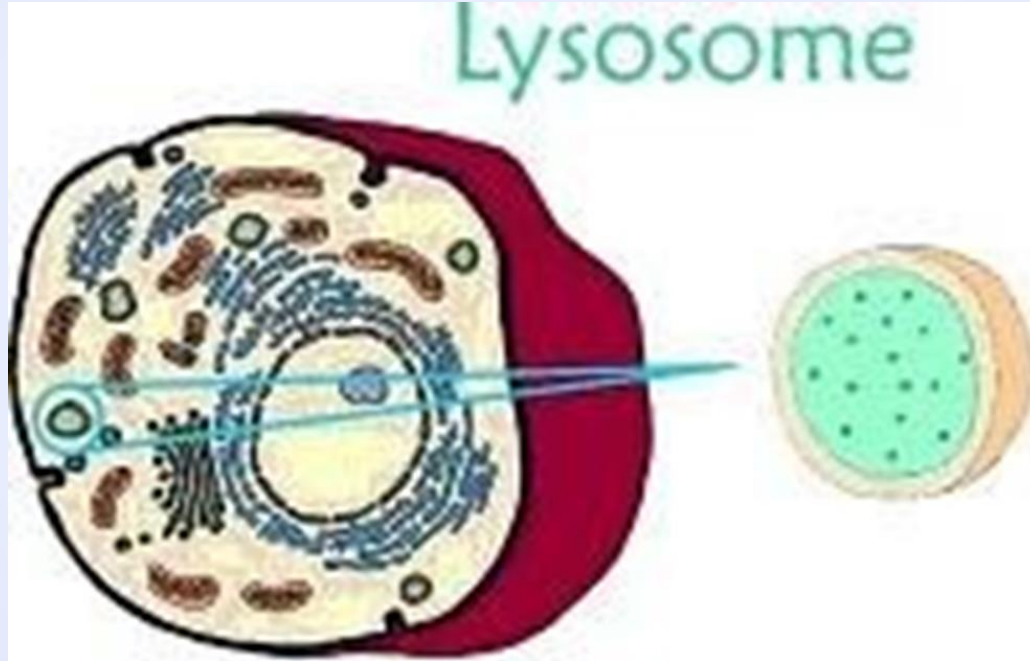


200 nm

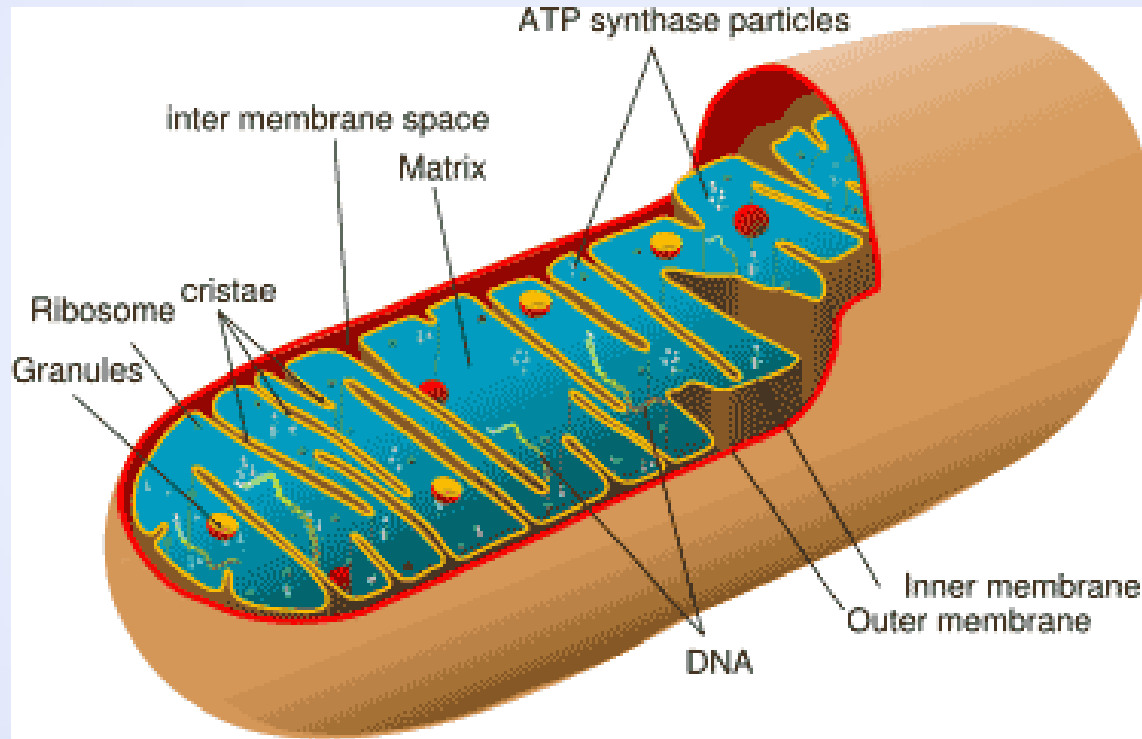
04LungTEM

1/7/0 REMF

Lisosom



Mitokondria



Vakuola

Plant Cell Central Vacuole

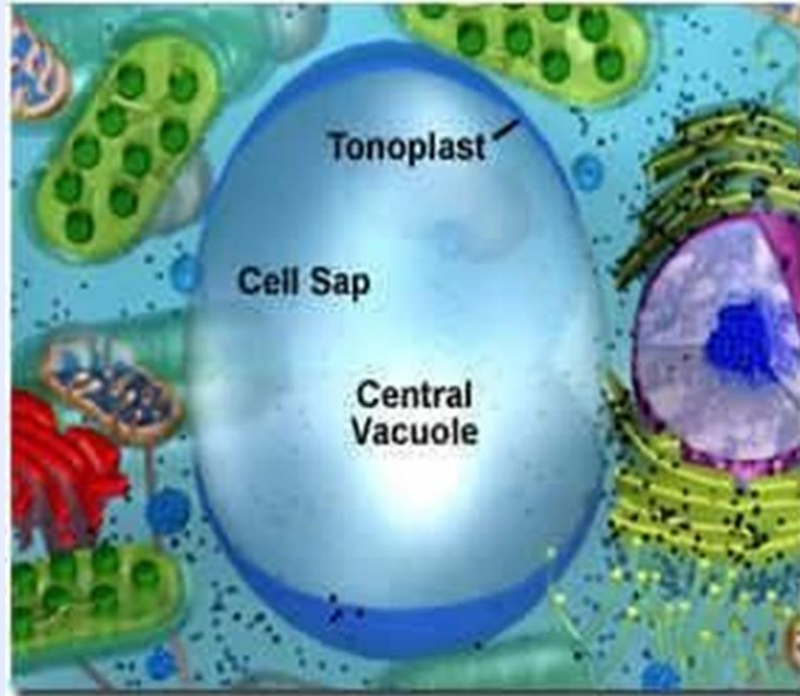
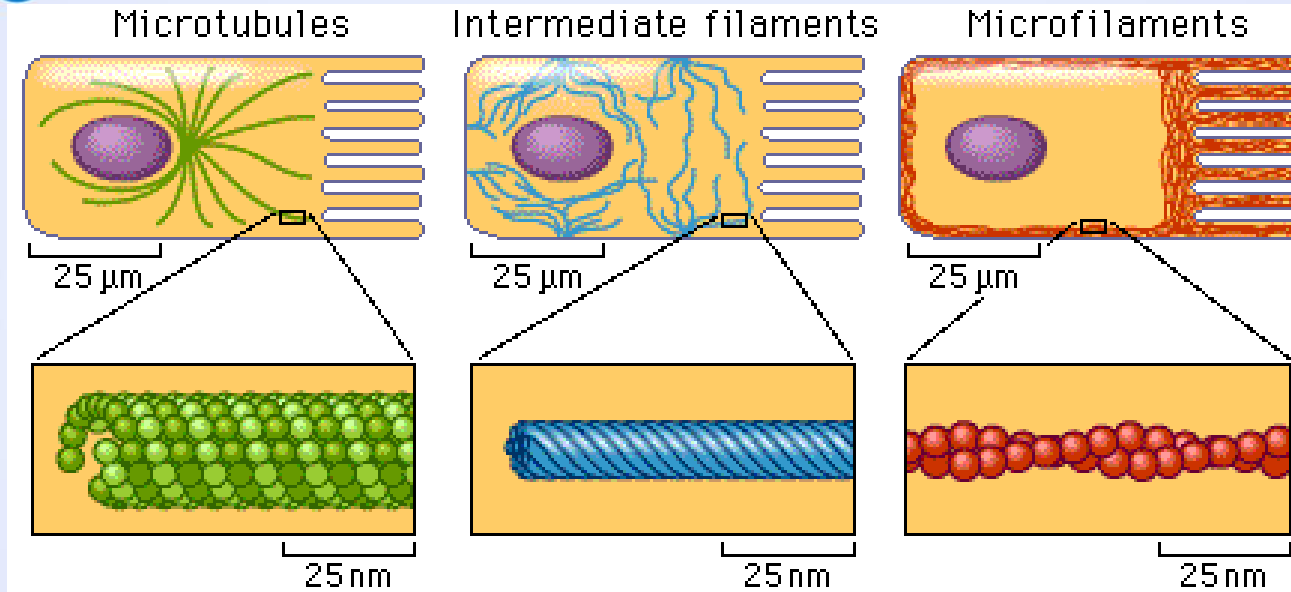


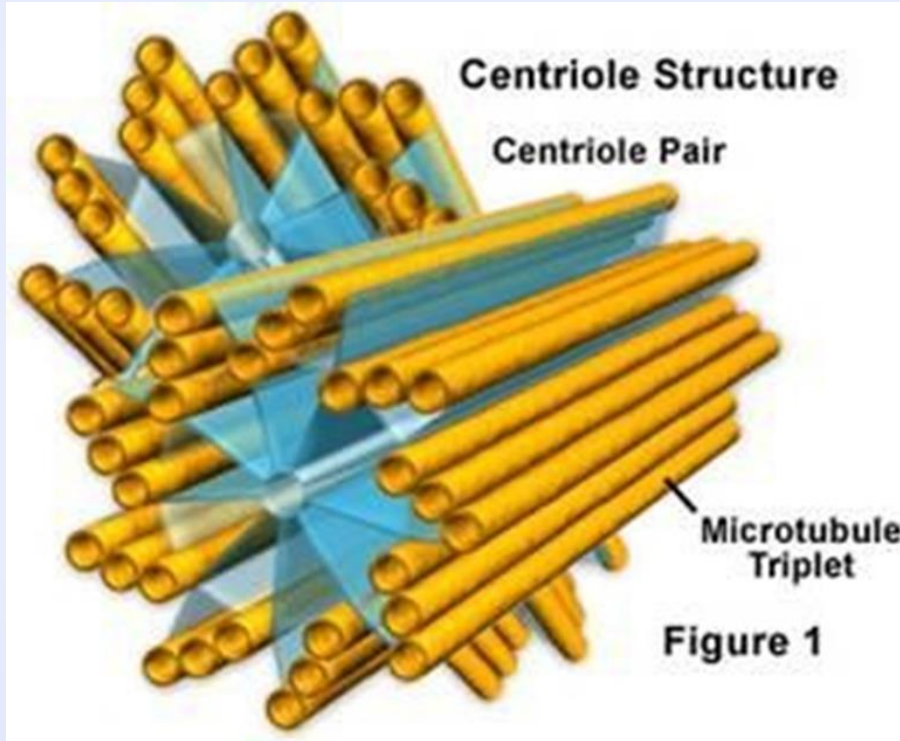
Figure 1

Mikrotubula dan Mikrofilamen

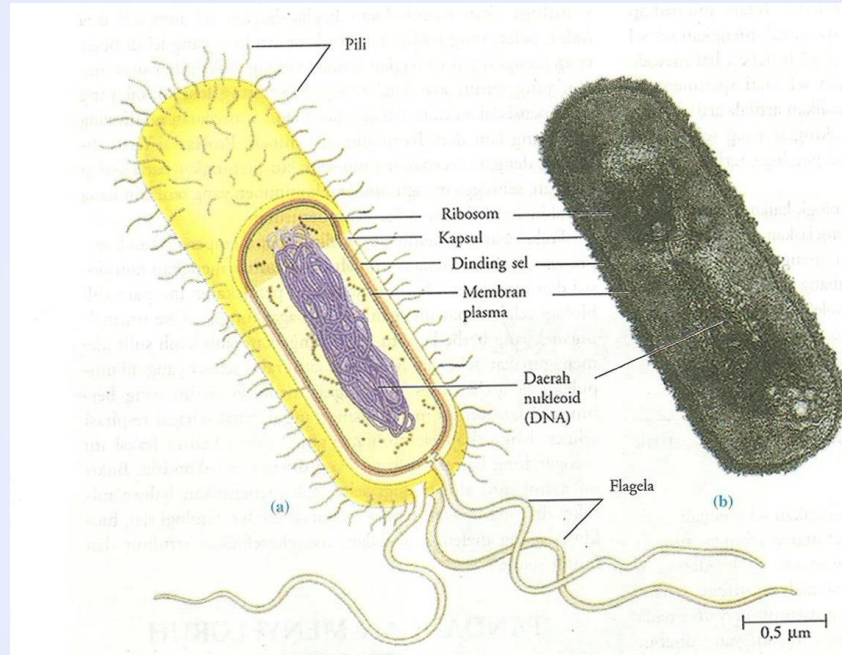


Mikrotubula dan *mikrofilamen* merupakan kerangka (sitoskeleton) yg memperkuat bentuk sel dan fungsi sel dalam pergerakan sel (silia/flagela)

Sentriol



Pili



Pili (alat perlekatan) yang menonjol pada permukaan sel

THANKS

Do you have any questions?

CREDITS: This presentation template was created by **Slidesgo**, including icons by **Flaticon**, and infographics & images by **Freepik**

Please keep this slide for attribution

